

Apex Tool Group GmbH

Industriestraße 1
73463 Westhausen
Germany

Tel: +49 (0) 73 63 81 0
Fax: +49 (0) 73 63 81 222
E-mail: info@apexpowertools.eu
website: www.apexpowertools.eu



APEX

TOOL GROUP

Sockets Quotation Worksheet

For quotation only. Not an order.



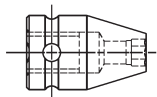
NAME _____ TITEL _____

COMPANY _____

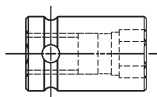
ADDRESS _____ CITY _____ STATE _____ ZIP _____

E-MAIL _____ PHONE _____ FAX _____

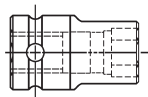
Socket Type



☐ Type A (tapered)



☐ Type B (straight)



☐ Type C (shouldered)

Broach Opening



☐ Hex



☐ Double Square



☐ Torx®

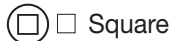


☐ Double Hex



☐ Fast Lead

☐ Other



☐ Square



☐ Surface Drive

Magnetic

☐ Magnetic Bolt Clearance (MB)

☐ Magnetic Bolt Clearance
with retaining ring (RMB)

☐ Strip Magnet (SM)

☐ Fixed Magnet (M)

☐ Non-magnetic

Drive Configuration

☐ DIN Standard

☐ No DIN groove

☐ Cross Hole (one wall only)

Extensions

Size

☐ Hex Drive _____

☐ Female Square _____

☐ Other _____

Extension Length

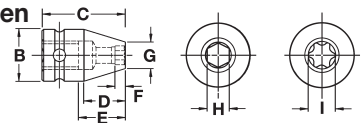
☐ No extension required

Quantity _____

Applied or
Driving Torque _____

Additional _____

Abmessungen



A. Square drive _____

B. Drive end diameter _____

C. Overall Length _____

D. Taper or shoulder length _____

E. Bolt clearance depth _____

F. Broach depth _____

G. Nose end diameter _____

H. Broach opening _____

I. Torx® size



Nylon Covers Requirements

Components To Be Covered

☐ Bit only

☐ Bit and Bit Holder

Cover Features

☐ Flush with tip of bit

☐ Exposed tip of bit

☐ Retractable

☐ Embedded magnets

☐ Press fit

☐ Free-spinning (able to spin independently
of part being covered)

☐ O.D. limitations (must specify) _____

☐ Other considerations (must specify) _____